

Tip dresser for robot welding guns

Stationary tip dresser **abe 3600.037.00A**

Braeuer-single head tip dresser with junction box

consisting of:

- milling base unit with vertical elevator reconciliation
- proximity switch for rotating motion, with connection cable
- motor 0,75 kW, with terminal box, with connection cable
- junction box according european standard 400VAC 50Hz / 24VDC
- solenoid valve (Bräuer-standard) for swarf blow out, with connection cable (compressed air input - 4 - 6 bar)
- swarf lead system with swarf bag
- stand, adjustably in the height (without dowel)
(indicate wished RAL-color when ordering)

The necessary milling heads are to be ordered separately !

The tip dresser are supplied according to standard to set-up variant V1.
If set-up variant H is wished, this is to be noted in the order text.
If set-up variant V2 is wished, then the additionally needed vertical angle is to order (see options)

Order example:

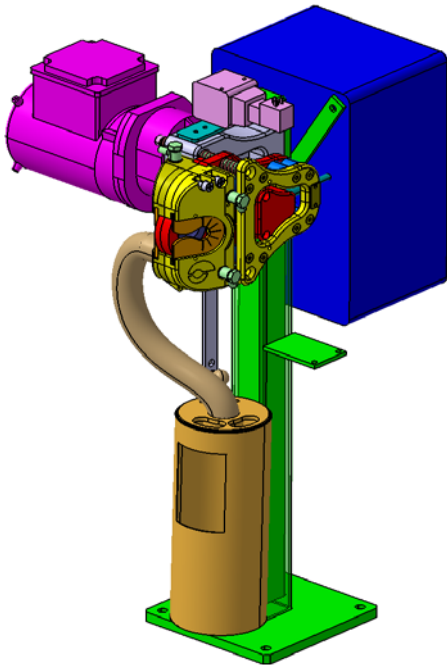
F-3600.037.00A

Tip dresser abe 3600.037.00A / V1

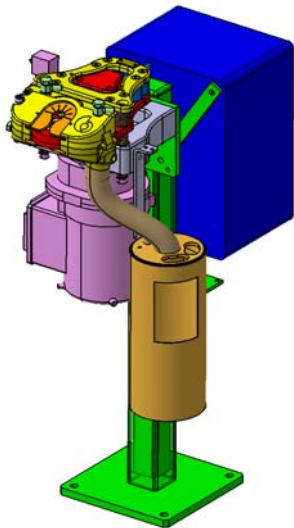
Stand RAL 9002 (gray white) - if no indication

Options:

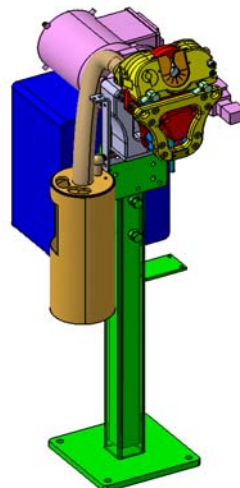
vertical angle (only for set-up variant V2)
order-N°.: 89040000010012



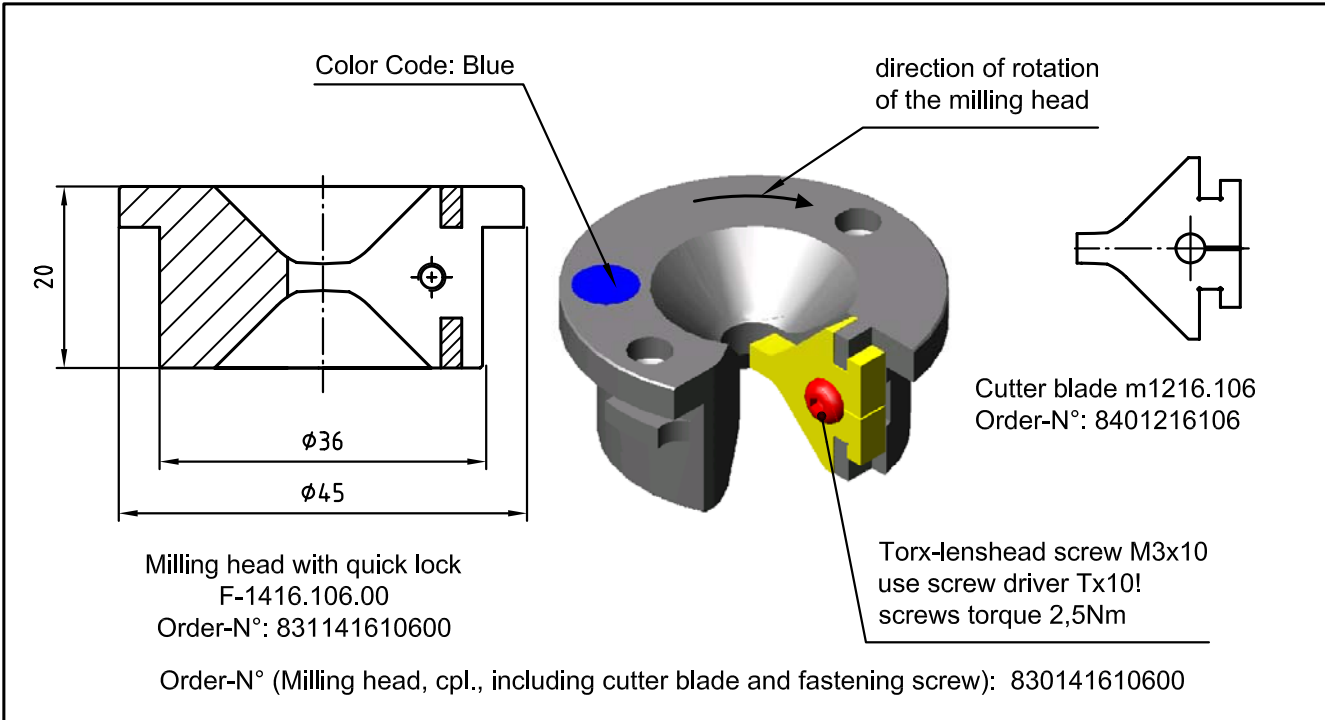
tip dresser set-up variant V1
(standard)



tip dresser set-up variant H

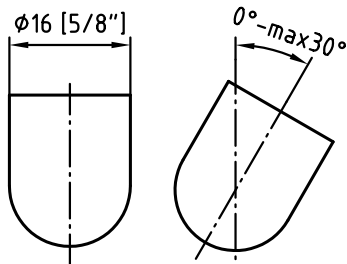


tip dresser set-up variant V2

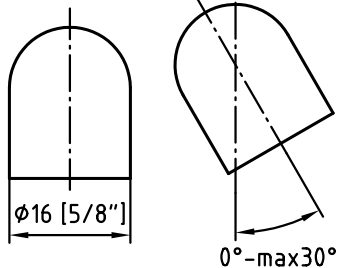


RECOMMENDED PAIRS OF CAPS AND POSITIONS

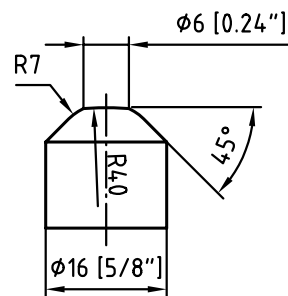
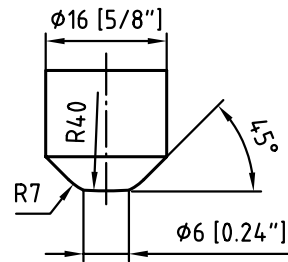
ISO 5821, type F;
58-V-3210, type A;
Nippert FB25N00;
Tuffaloy Prod.:
126-0252-20;



ISO 5821, type F;
58-V-3210, type A;
Nippert FB25N00;
Tuffaloy Prod.:
126-0252-20;



CAPS AFTER MILLING



Notes:

recommended electrode force - 1.2kN
maximum electrode force - 1.5kN
Use a new screw (Torx) and thread lock fluid (low firmness) with the change the cutter blade!

Do not touch cutting blades with metal tools!

ACCESSORIES: Fastening screw for cutter blade (Torx-lenshead screw M3x10)
tool for quick lock

Order-N°: 30738003100
Order-N°: 8302400001



MILLING SYSTEM

1416.106.00

Date

03.12.2007

Release date

Name

Stopp

Name