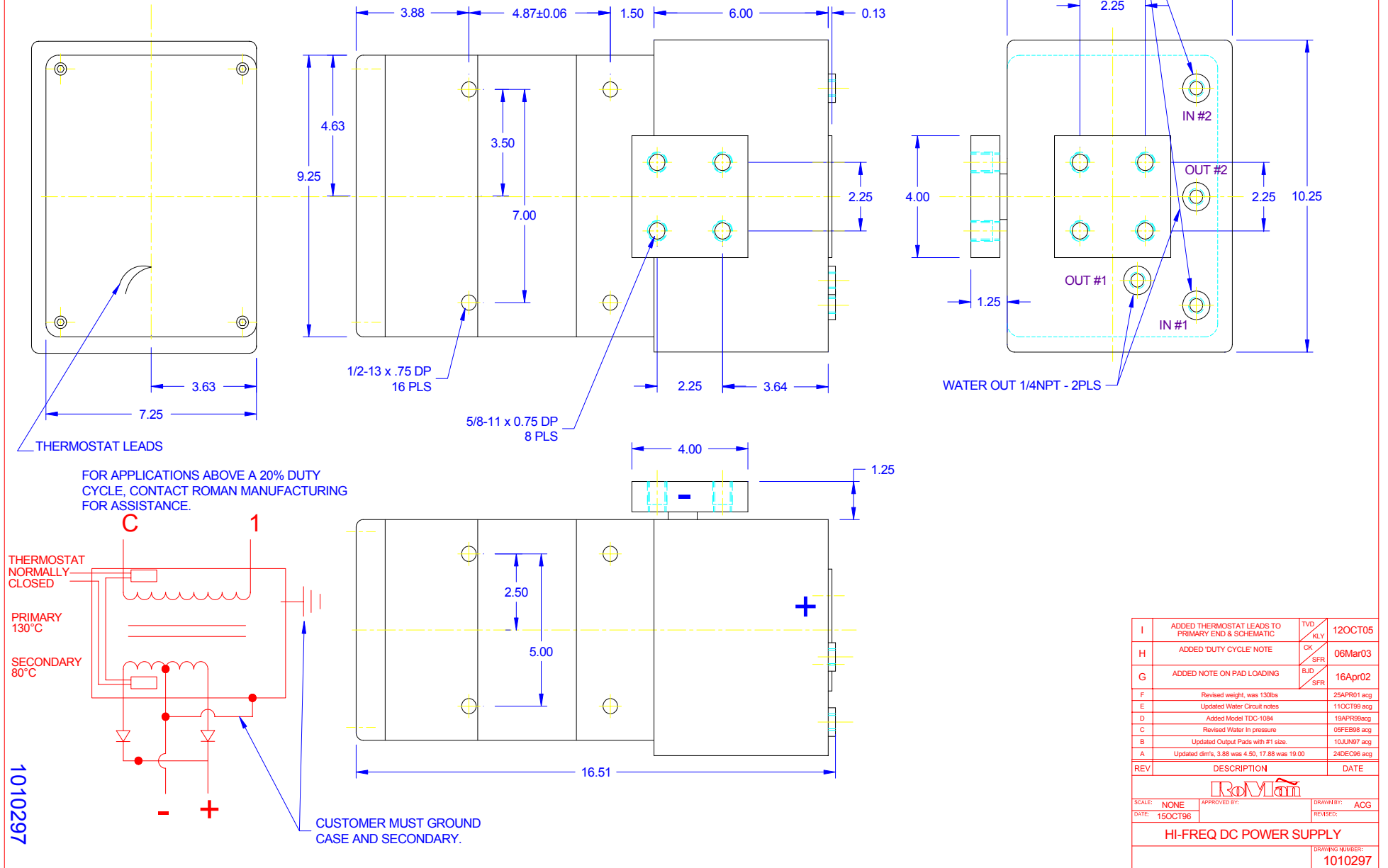


MODEL	KVA @ 50% DC	PRIMARY VOLT/FREQ	SECONDARY VOLTAGE (DC)	TURNS RATIO	WEIGHT LBS
TDC-1084	175	650/1000Hz	9.0	72:1	150
TDC-1036	250	650/1000Hz	13.0	50:1	150

NOTE*
The secondary terminals of this device are intended as an electrical connection only. Applications must be designed to minimize any forces applied to the secondary terminals, this can be accomplished by transferring forces to a structural member.

COOLING REQUIREMENTS: 2 GPM PER CIRCUIT @ 30°C
4 GPM TOTAL



REV	DESCRIPTION	DATE
I	ADDED THERMOSTAT LEADS TO PRIMARY END & SCHEMATIC	12OCT05
H	ADDED 'DUTY CYCLE' NOTE	06Mar03
G	ADDED NOTE ON PAD LOADING	16Apr02
F	Revised weight, was 130lbs	25APR01 acg
E	Updated Water Circuit notes	11OCT99 acg
D	Added Model TDC-1084	19APR00acg
C	Revised Water In pressure	05FEB98 acg
B	Updated Output Pads with #1 size.	10JUN97 acg
A	Updated dim's, 3.88 was 4.50, 17.88 was 19.00	24DEC96 acg

SCALE: NONE	APPROVED BY:	DRAWN BY: ACG
DATE: 15OCT96		REVISED:
HI-FREQ DC POWER SUPPLY		
		DRAWING NUMBER: 1010297