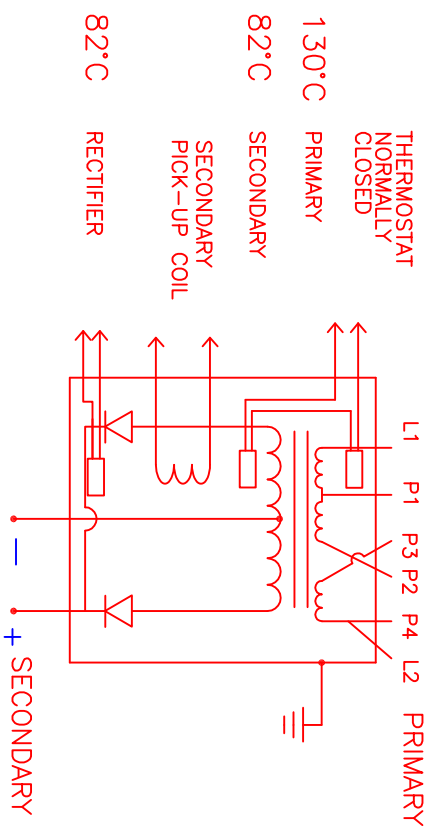
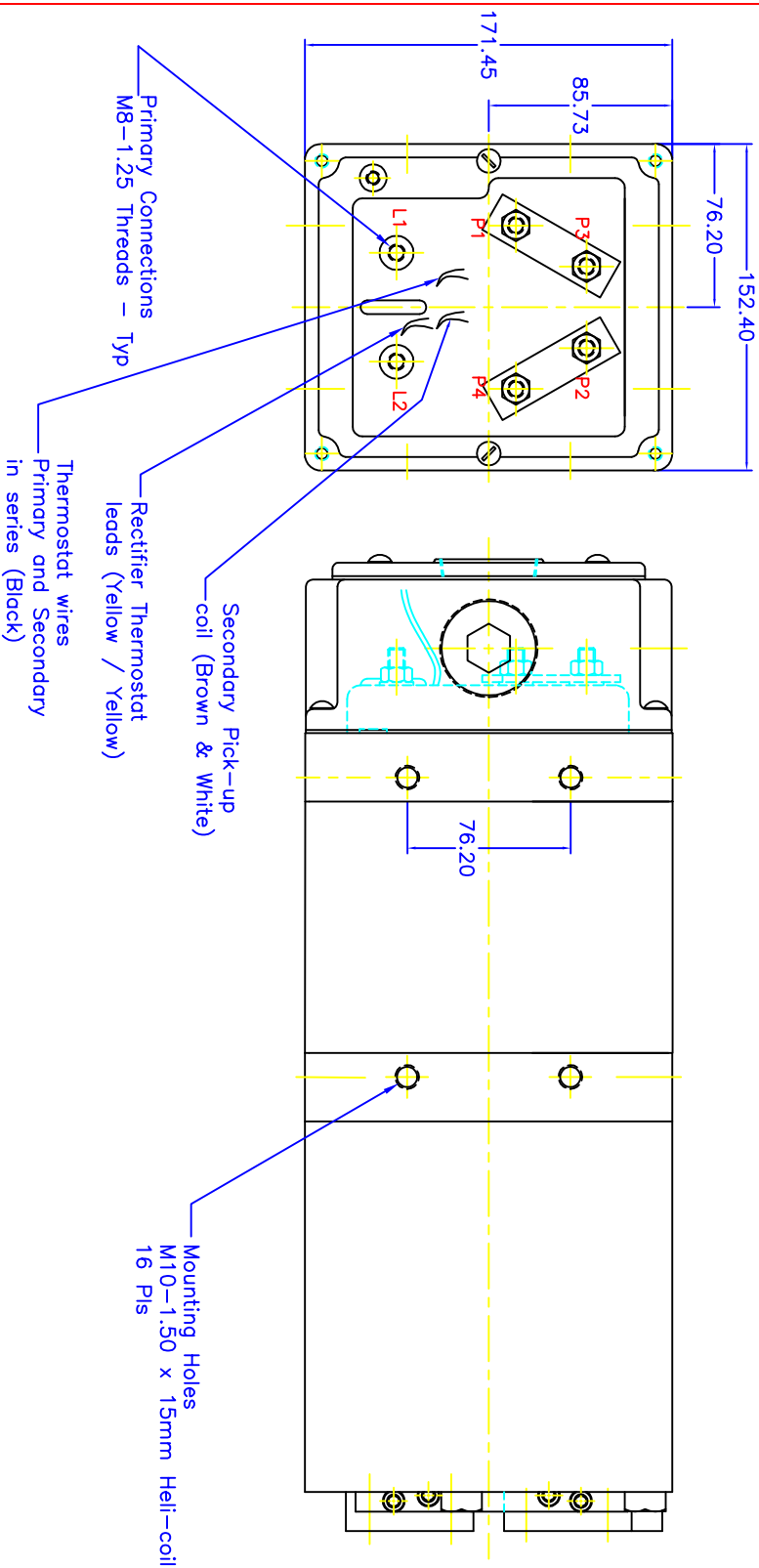
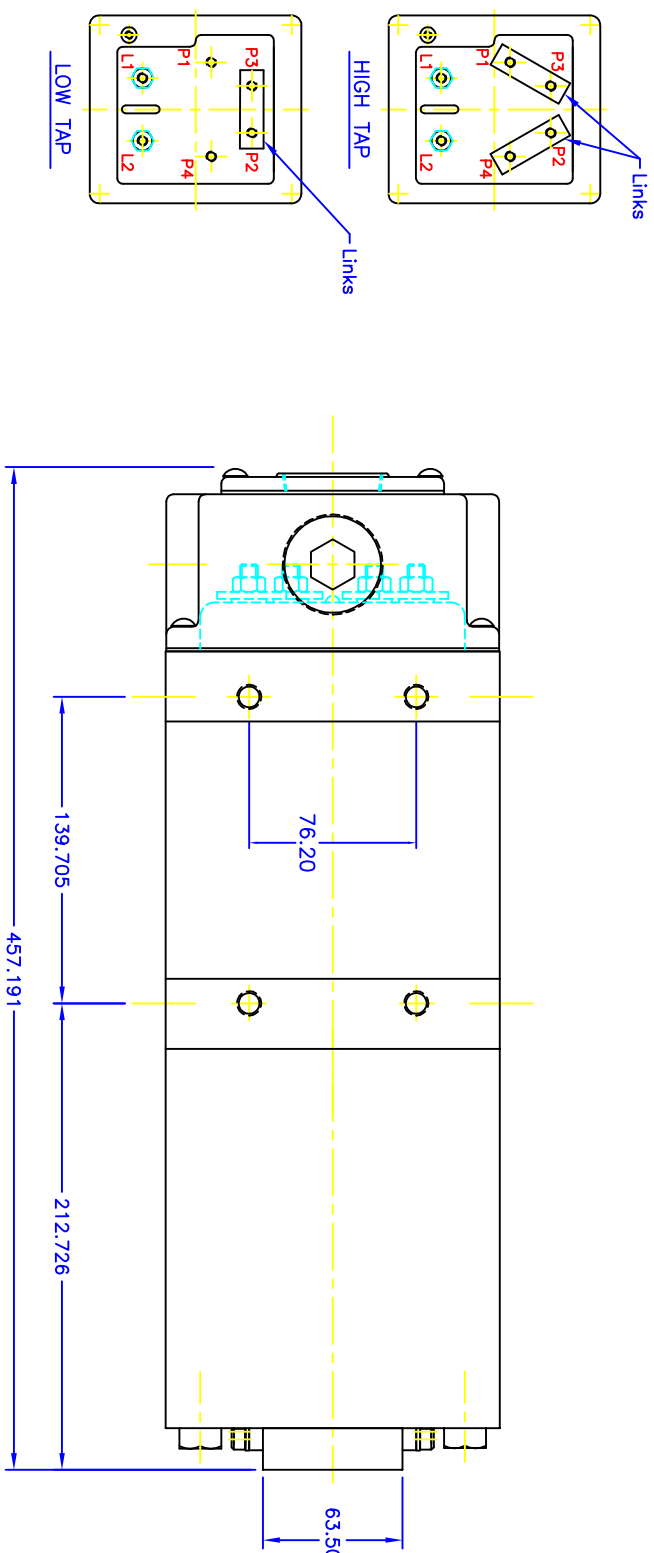


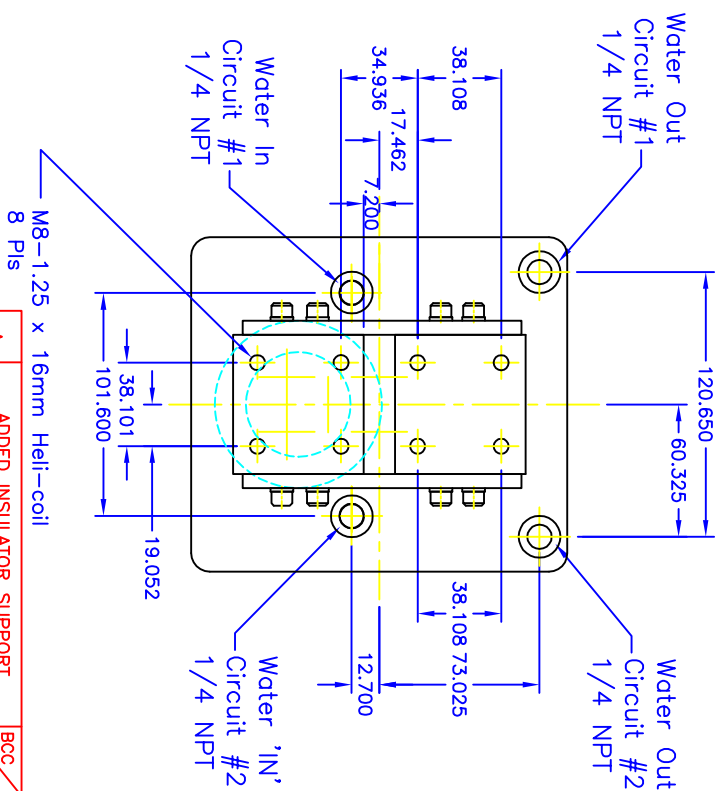
MODEL	KVA	PRIMARY VOLT/FREQ	SECONDARY VOLTAGE (DC)	TURNS RATIO	WEIGHT
TDC-5441	170	500/1000Hz	10.00 - 13.15	50:1	100
	50% DC		LO-TAP HI-TAP	LO-TAP HI-TAP	LBS

COOLING REQUIREMENTS: 2 GPM PER CIRCUIT @ 30°C MAX
4 GPM TOTAL



TRANSFORMER CASE MUST BE GROUNDED. TRANSFORMER WILL BE SUPPLIED WITH A JUMPER CONNECTING SECONDARY CENTER TAP TO CASE. USER MUST PROVIDE APPROPRIATE GROUNDING OF SECONDARY CIRCUIT.

NOTE* SECONDARY OUTPUT TERMINALS ARE DESIGNED AS ELECTRICAL CONNECTIONS. MECHANICAL FORCES ON THESE CONNECTIONS MAY VOID WARRANTY. NOTE* CONTACT RoMan MANUFACTURING FOR APPLICATION ABOVE 20% DUTY CYCLE.



REV	DESCRIPTION	BCC	DATE
A	ADDED INSULATOR SUPPORT & REV WIRING SCHEMATIC	KLY	16JUN06

SCALE: NONE

DATE: 15Jun04

APPROVED BY: RB

DRAWN BY: RB

REVISED:

POWER SUPPLY

TDC-5441

DRAWING NUMBER: 5441-1

5441-1